

# EviewsR: A Seamless Integration of Eviews and R

Sagiru Mati

Monday: September 19, 2022

## Contents

<b>1</b>	<b>About EviewsR</b>	<b>1</b>
<b>2</b>	<b>Installation</b>	<b>1</b>
<b>3</b>	<b>Setup</b>	<b>1</b>
<b>4</b>	<b>Usage</b>	<b>2</b>
<b>5</b>	<b>Ways to use EviewsR</b>	<b>2</b>
5.1	EviewsR along with R Markdown or Quarto document . . . . .	2
5.2	EviewsR along with base R . . . . .	4
<b>6</b>	<b>Template</b>	<b>10</b>

## 1 About EviewsR

EviewsR is an R package that can run Eviews program from R. It also adds **eviews** as knit-engine to **knitr** package.

## 2 Installation

EviewsR can be installed using the following commands in R.

```
install.packages("EviewsR")  
OR  
devtools::install_github("sagirumati/EviewsR")
```

## 3 Setup

To run the package successfully, you need to do one of the following

- Don't do anything if the name of EViews executable is one of the following: EViews13\_x64, EViews13\_x86, EViews12\_x64, EViews12\_x86, EViews11\_x64, EViews11\_x86, EViews10\_x64, EViews10\_x86, EViews9\_x64, EViews9\_x86, EViews10. The package will find the executable automatically.
- Rename the Eviews executable to `eviews` or one of the names above.
- Alternatively, you can use `set_eviews_path` function to set the path the EViews executable as follows:

```
set_eviews_path("C:/Program Files (x86)/EViews 10/EViews10.exe")
```

## 4 Usage

Please load the EviewsR package as follows:

```
```{r}
library(EviewsR)
```
```

## 5 Ways to use EviewsR

The package can work with base R, R Markdown or Quarto document.

### 5.1 EviewsR along with R Markdown or Quarto document

After loading the package, a chunk for Eviews can be created by supplying `eviews` as the engine name in R Markdown or Quarto document as shown below :

```
```{eviews}
#| label: fig-EviewsR
#| eval: true
#| fig.subcap: ["X graph", "Y graph"]
#| fig.cap: "EViews graphs imported automatically by fig-EviewsR chunk"

    'This program is created in R Markdown with the help of EviewsR package

wfccreate(page=EviewsRPage,wf=EviewsR_workfile) m 2000 2022
for %y EviewsR package page1 page2
pagecreate(page={%y}) EviewsR m 2000 2022
next
pageselect EviewsRPage
rndseed 123456
genr y=@cumsum(nrnd)
genr x=@cumsum(nrnd)
equation ols.ls y c x
freeze(OLSTable,mode=overwrite) ols
freeze(EviewsR_Plot,mode=overwrite) y.line
wfsave EviewsR_workfile
```
```

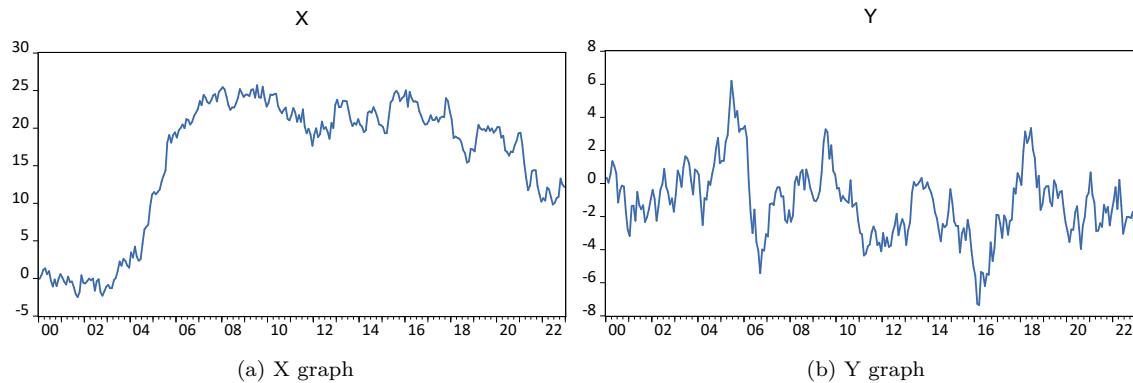


Figure 1: EViews graphs imported automatically by fig-EViewsR chunk

Table 1: Selected cells of EViews table object

| Variable | Coefficient | Std. Error | t-Statistic | Prob.  |
|----------|-------------|------------|-------------|--------|
| C        | -0.301413   | 0.260956   | -1.155033   | 0.2491 |
| X        | -0.051410   | 0.014316   | -3.591137   | 0.0004 |

The above chunk creates an EViews program with the chunk's content, then automatically open EViews and run the program, which will create an EViews workfile with pages containing monthly sample from 2000 to 2022. The program will also save an EViews workfile named `EViewsR_workfile` in the current directory.

The `eviews` chunk automatically returns the outputs of each equation object as a dataframe, accessible via `chunkLabel$pageName_equationName`. For example, The  $R^2$  of the `ols` equation object is 0.044951, which can be accessed using ``r EViewsR$eviewsrpage_ols$r2``. We can obtain the table object by `chunkLabel$pageName_tableName`. Therefore, `EViewsR$eviewsrpage_olstable` will give us the `OLSTable` object as dataframe. Note the underscore (`_`) between the `pageName` and `equationName`, and between the `pageName` and `tableName`.

```
EViewsR$eviewsrpage_ols$r2
#> [1] 0.044951
EViewsR$eviewsrpage_ols$aic
#> [1] 4.310163
K = EViewsR$eviewsrpage_olstable[c(6, 8, 9), 1:5]
colnames(K) = NULL
knitr::kable(K, row.names = F, caption = "Selected cells of EViews table object")
```

The EViews series objects are also imported automatically as dataframe (by default) or `xts` objects (if we use chunk option `class="xts"`). They are accessed via `chunkLabel$pageName`.

```
EViewsR$eviewsrpage |>
  head()
#>   date      x      y
#> 1 2000-01-01 -0.06062345 0.34705763
#> 2 2000-02-01 0.40287977 0.04959103
#> 3 2000-03-01 1.13387526 0.56589164
#> 4 2000-04-01 1.34089330 1.35264827
#> 5 2000-05-01 0.54596099 1.05434874
#> 6 2000-06-01 0.96869514 0.61693341
```

## 5.2 EviewsR along with base R

### 5.2.1 The create\_object() function

The function `create_object()` can be used to create an EViews object in the existing EViews workfile.

```
create_object(wf = "EviewsR_workfile", action = "equation", action_opt = "",
             object_name = "eviews_equation", view_or_proc = "ls", options_list = "",
             arg_list = "y ar(1)")
```

```
create_object(wf = "EviewsR_workfile", object_name = "x1", object_type = "series",
             expression = "y^2")
```

### 5.2.2 The evIEWS\_graph() function

EViews graphs can be included in R Markdown or Quarto document by `evIEWS_graph()` function.

To create graph from existing EViews series objects:

```
evIEWS_graph(wf = "EviewsR_workfile", page = "EviewsRPage", series = "x y",
             mode = "overwrite", graph_options = "m")
```

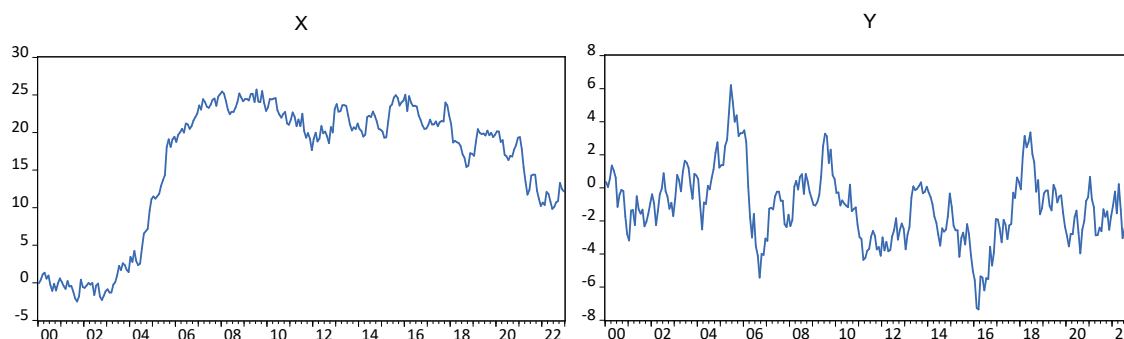


Figure 2: Graphs of existing EViews series objects imported by fig-eviewsGraph chunk

We can also create objects from an R dataframe

```
Data = data.frame(x = cumsum(rnorm(100)), y = cumsum(rnorm(100)))
evIEWS_graph(series = Data, group = TRUE, start_date = "1990Q4",
             frequency = "Q")
```

### 5.2.3 The evIEWS\_import() function

Data can be imported from external sources by `evIEWS_import()` function.

```
evIEWS_import(source_description = "evIEWS_import.csv", start_date = "1990",
             frequency = "m", rename_string = "x ab", smpl_string = "1990m10 1992m10")
```

Alternatively, use the dataframe as the `source_description`.



Figure 3: Graphs of an R dataframe imported by fig-eviewsGraph1 chunk

```

eviews_import(source_description = Data, wf = "eviews_import1",
  start_date = "1990", frequency = "m", rename_string = "x ab",
  smpl_string = "1990m10 1992m10")

```

#### 5.2.4 The `eviews_pagesave()` function

Similar to Eviews workfile, an Eviews page can be saved in various formats by `eviews_pagesave()` function.

```

eviews_pagesave(wf = "eviewsr_workfile", page = "EviewsRPage",
  source_description = "pagesave.csv", drop_list = "y")

```

#### 5.2.5 The `eviews_wfcreate()` function

An Eviews workfile can be created using `eviews_wfcreate()` function in R.

```

eviews_wfcreate(wf = "eviews_wfcreate", page = "EviewsRPage",
  frequency = "m", start_date = "1990", end_date = "2022")

```

Create a workfile from a dataframe

```

eviews_wfcreate(source_description = Data, wf = "eviews_wfcreate1",
  page = "EviewsR_page", frequency = "m", start_date = "1990")

```

### 5.2.6 The `evIEWS_wfsave()` function

An EViews workfile can be saved various output formats using `evIEWS_wfsave()` in function in R.

```
evIEWS_wfsave(wf = "evIEWSr_workfile", source_description = "wfsave.csv")
```

### 5.2.7 The `exec_commands()` function

A set of EViews commands can be executed with the help of `exec_commands()` function in R.

```
exec_commands(c("wfcreate(wf=exec_commands,page=evIEWSPage) m 2000 2022"))
```

```
evIEWSCommands = "pagecreate(page=evIEWSpage1) 7 2020 2022
for %page evIEWSpage evIEWSpage1
pageselect {%page}
genr y=@cumsum(nrnd)
genr x=@cumsum(nrnd)
equation ols.ls y c x
graph x_graph.line x
graph y_graph.area y
freeze(OLSTable,mode=overwrite) ols
next
"
exec_commands(commands = evIEWSCommands, wf = "exec_commands")
```

### 5.2.8 The `export_dataframe()` function

Use `export_dataframe()` function to export dataframe object to EViews.

```
export_dataframe(wf = "export_dataframe", source_description = Data,
  start_date = "1990", frequency = "m")
```

### 5.2.9 The `import_equation()` function

Import EViews equation data members into R, R Markdown or Quarto.

```
import_equation(wf = "EviewsR_workfile", page = "EviewsRPage",
  equation = "OLS")
```

To access the imported equation in base R:

### 5.2.10 The `import_graph()` function

Import EViews graph objects(s) into R, R Markdown or Quarto.

```
import_graph(wf = "evIEWSr_workfile")
```

To import only graphs that begin with x:

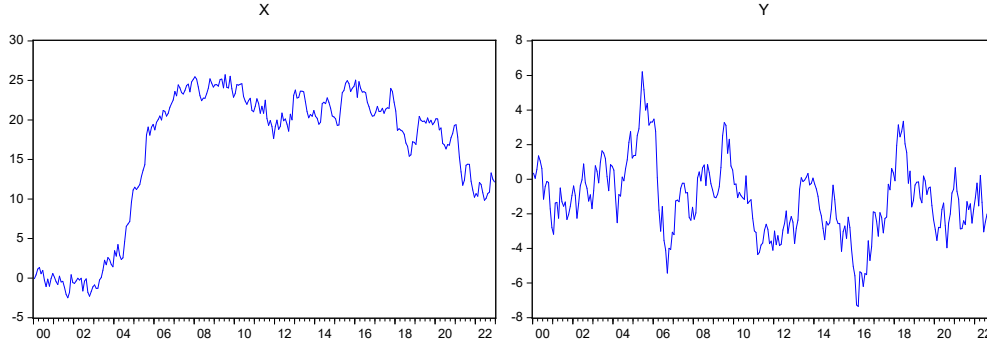


Figure 4: EViews graphs imported using import\_graph() function

```
import_graph(wf = "exec_commands", graph = "x*")
```

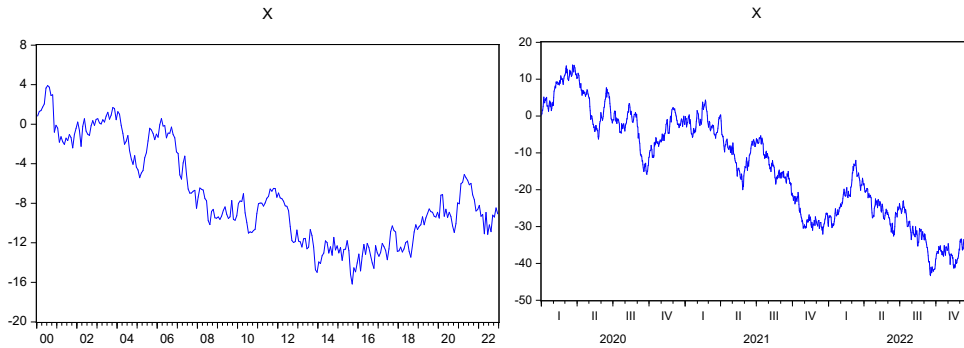


Figure 5: EViews graphs that begin with X imported using import\_graph() function

### 5.2.11 The import\_kable() function

EViews tables can be imported as kable object by import\_kable() function. Therefore, we can include the

```
import_kable(wf="EViewsR_workfile",page="EViewsRPage",table = "OLSTable",
caption = "Selected cells of EViews table imported using import\\_kable() function",
range = "r7c1:r10c5",digits=3)
```

Table 2: Selected cells of EViews table imported using import\_kable() function

| Variable | Coefficient | Std. Error | t-Statistic | Prob. |
|----------|-------------|------------|-------------|-------|
| C        | -0.301      | 0.261      | -1.155      | 0.249 |
| X        | -0.051      | 0.014      | -3.591      | 0.000 |

### 5.2.12 The import\_series() function

Use import\_series() function to import data from EViews to R as a dataframe. The function creates a new environment `eviews`, whose objects can be accessed via `eviews$pageName`.

```
import_series(wf = "evIEWSr_workfile")
```

To access the series in base R:

```
evIEWS$evIEWSpage |>  
  head()
```

To import the series as an `xts` object:

```
import_series(wf = "evIEWSr_workfile", series = c("x", "y"),  
              class = "xts")
```

### 5.2.13 The `import_table()` function

Import EViews table objects(s) into R, R Markdown or Quarto.

To import all table objects across all pages

```
import_table(wf = "EviewsR_workfile")
```

To import specific table objects, for example `OLSTable`

```
import_table(wf = "EviewsR_workfile", table = "OLSTable")
```

To import table objects on specific pages

```
import_table(wf = "EviewsR_workfile", page = " EviewsRPage")
```

To access the table in base R (`evIEWS$pageName_tableName`)

```
evIEWS$evIEWSpage_olstable
```

### 5.2.14 The `import_workfile()` function

Import EViews equation data members, graph, series and table objects(s) into R, R Markdown or Quarto. This function is a blend of `import_equation()`, `import_graph()`, `import_series()` and `import_table()` functions.

To import all equation, graph, series and table objects across all pages

```
import_workfile(wf = "EviewsR_workfile")
```

To import specific objects

```
import_workfile(wf = "exec_commands", equation = "ols", graph = "x*",  
               series = "y*", table = "ols*")
```

To import objects on specific page(s)



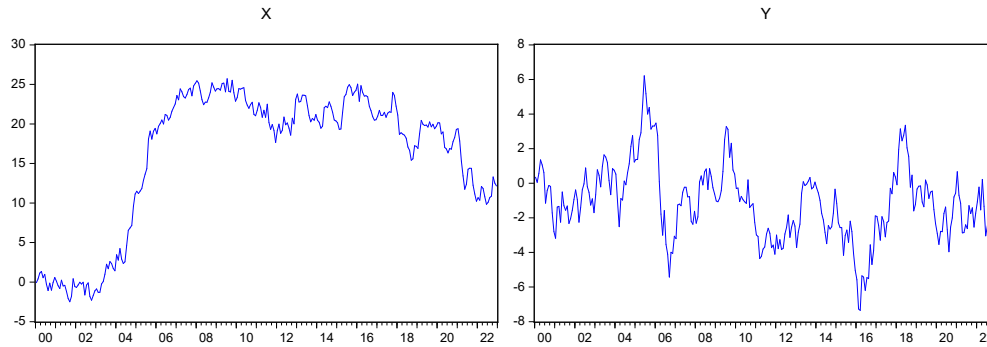


Figure 6: EViews graphs automatically imported by `import_workfile()` function

```
import_workfile(wf = "exec_commands", page = "evIEWSpage evIEWSpage1")
```

To access the objects in base R:

```
evIEWS$evIEWSpage_ols # equation
# evIEWSpage-x_graph # graph saved in 'figure/' folder
evIEWS$evIEWSpage |>
  head() # series
evIEWS$evIEWSpage_olstable # table
```

### 5.2.15 The `rwalk()` function

A set of random walk series can be simulated in R using EViews engine, thanks to `rwalk()` function.

```
rwalk(wf = "evIEWSr_workfile", series = "X Y Z", page = "", rndseed = 12345,
      frequency = "M", num_observations = 100, class = "xts")
```

```
xts::plot.xts(rwalk$xyz, type = "l", main = "")
ggplot2::autoplot(rwalk$xyz, facet = "")
```

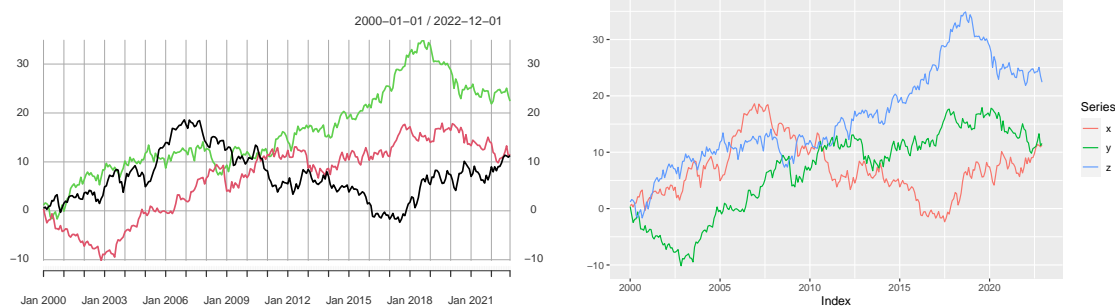


Figure 7: Plots of imported EViews random walk series objects

### 5.2.16 Demo

The demo files are included and can be accessed via `demo(package="EviewsR")`

```
demo(create_object())
demo(eviews_graph())
demo(eviews_import())
demo(eviews_pagesave())
demo(eviews_wfcreate())
demo(eviews_wfsave())
demo(exec_commands())
demo(export_dataframe())
demo(import_equation())
demo(import_graph())
demo(import_kable())
demo(import_series())
demo(import_table())
demo(import_workfile())
demo(rwalk())
demo(set_eviews_path())
```

## 6 Template

Template for R Markdown is created. Go to **file->New File->R Markdown-> From Template->EviewsR**. Please download the example files from Github.